

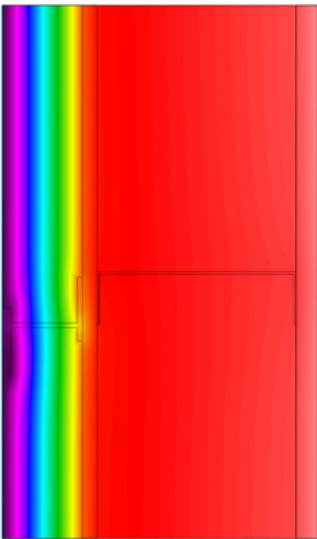
Shown with optional weep holes.

Available for multiple insulation thicknesses.

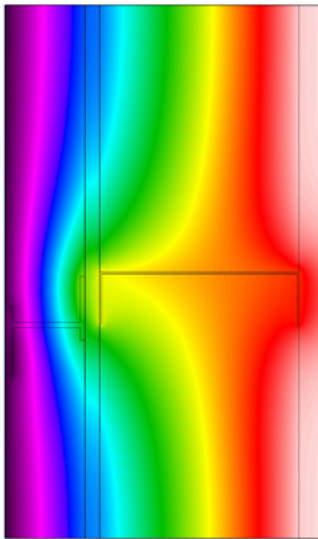


# STRONGIRT™

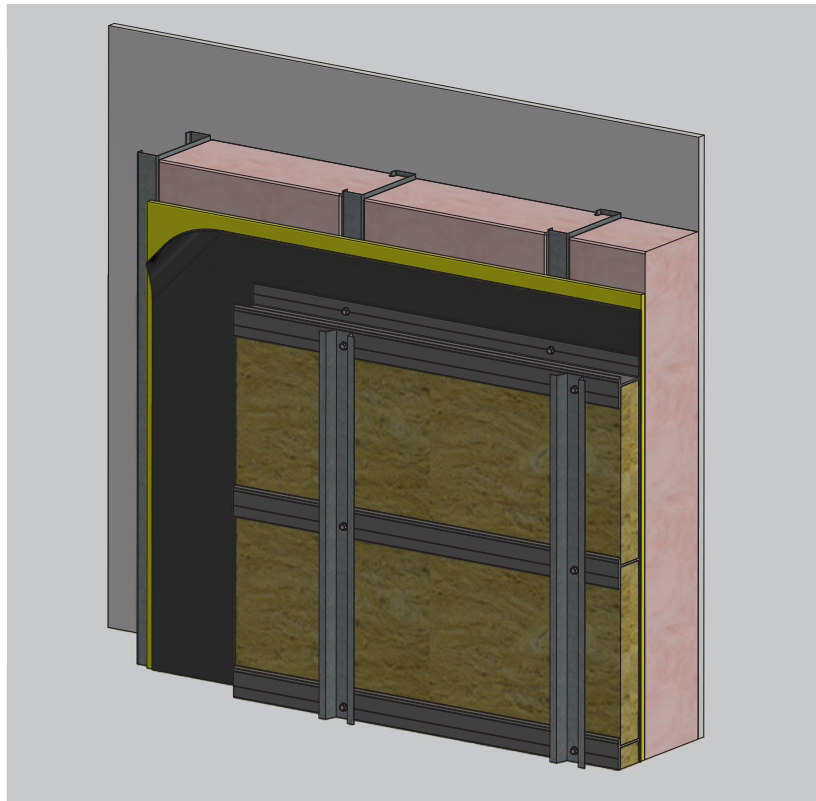
## PULTRUDED FRP CLADDING ATTACHMENT SUPPORT SYSTEM



Installed with no cavity insulation



Installed with mineral wool insulation



# PULTRUDED FRP CLADDING ATTACHMENT SUPPORT SYSTEM



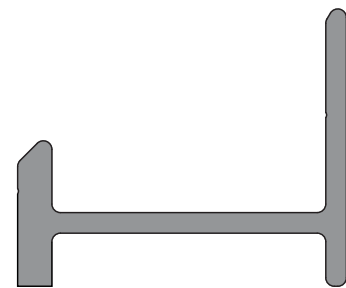
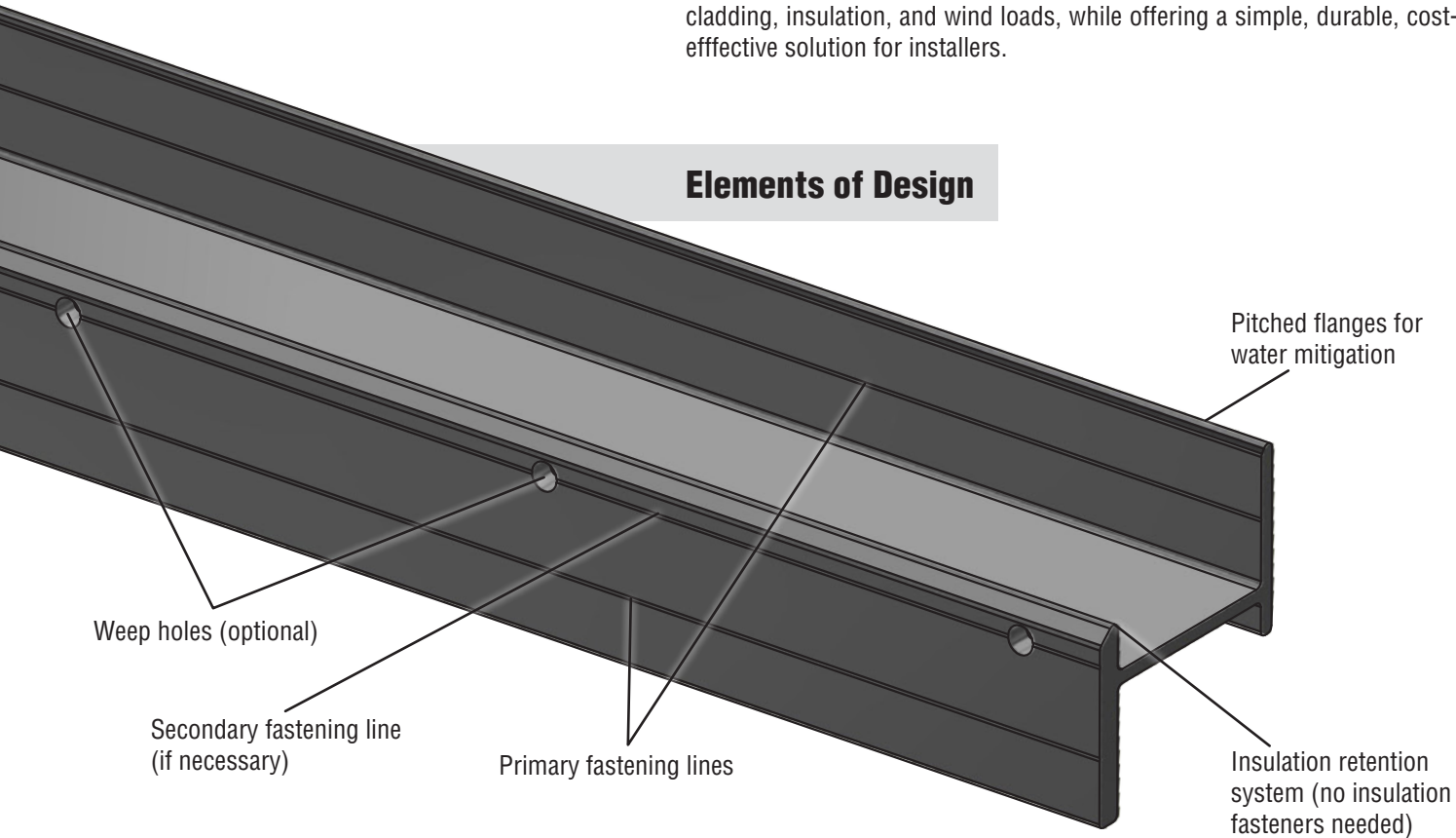
Caption

## What is STRONGIRT™?

STRONGWELL's STRONGIRT™ is the ideal continuous insulation (CI) cladding attachment support system. This all-FRP (fiberglass) pultruded composite uses a custom fire-retardant resin system and unique laminate design to offer superior pull out strength, excellent thermal efficiency, and the ability to work with any non-proprietary insulation (no routing or fabricating of rigid insulation is required).

The geometry of STRONGIRT™ offers self-draining to clear rainwater, and weep holes can be pre-fabricated or added in the field for additional drainage needs. The product has been engineered for strength and stiffness to support cladding, insulation, and wind loads, while offering a simple, durable, cost-effective solution for installers.

## Elements of Design



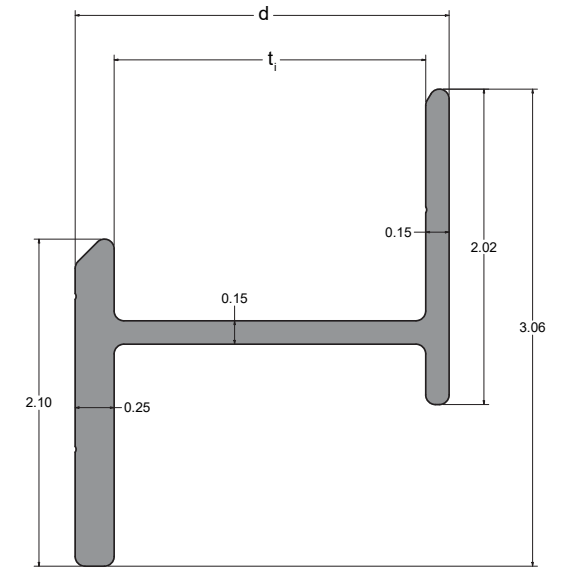
Girt can be fabricated to provide a non-structural J-channel or starter strip.

## STRONGIRT™ Features and Benefits:

- 100% FRP system (no metal to rust or react)
- Superior pullout strength
- Invisible in rainscreen cavities
- Double fastening system on front flange
- Light weight
- Works with all non-proprietary insulation
- No in-field fabrication required
- 10' and 20' standard lengths (custom lengths available)
- Thermally efficient replacement to metal cladding attachment systems
- Code compliant

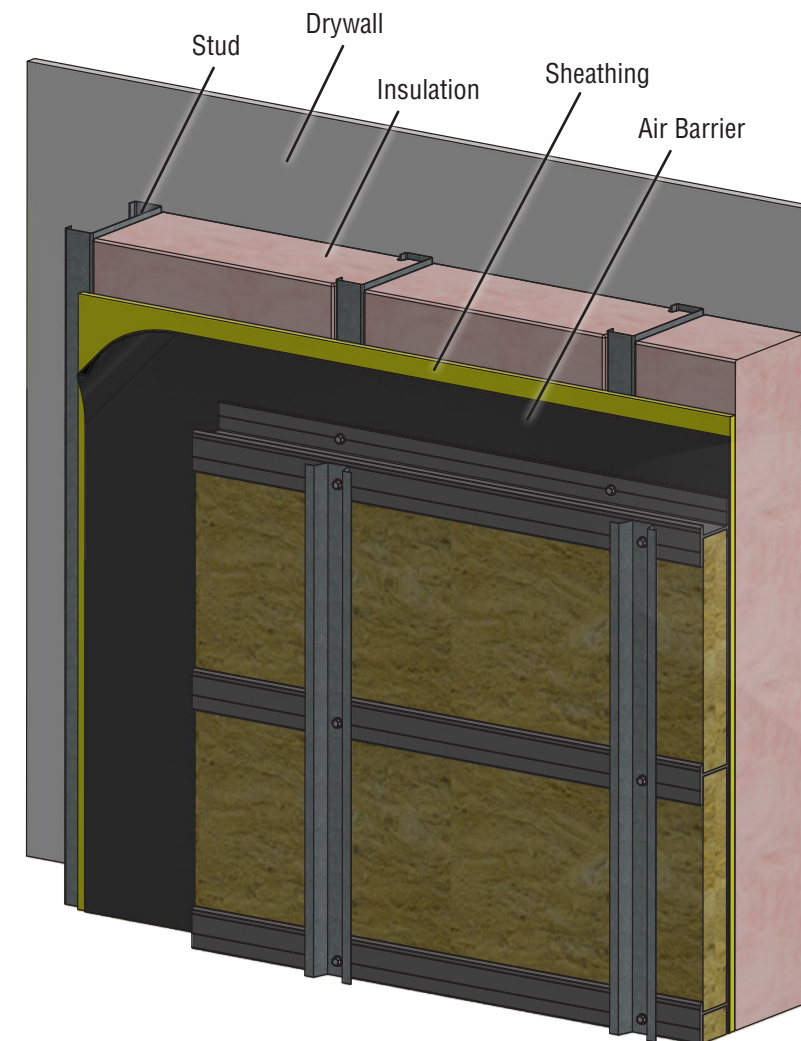
# PROPERTIES

PROPERTY	TEST METHOD	VALUE
Tensile Strength (LW)	ASTM D638	30,000 psi (207 N/mm <sup>2</sup> )
Tensile Modulus (LW)	ASTM D638	2.5 x 10 <sup>6</sup> psi (17.2 x 10 <sup>3</sup> N/mm <sup>2</sup> )
Short Beam Shear Stress (LW)	ASTM D2344	4,500 psi (31.0 N/mm <sup>2</sup> )
Pullout Strength Load	ASTM D7332	lbf (kgm)
Flammability Classification	UL 94	V-0
Thermal Conductivity	ASTM C177	4 BTU-in/ft <sup>2</sup> -Hr/°F (83.1 W-m/m <sup>2</sup> /°C)



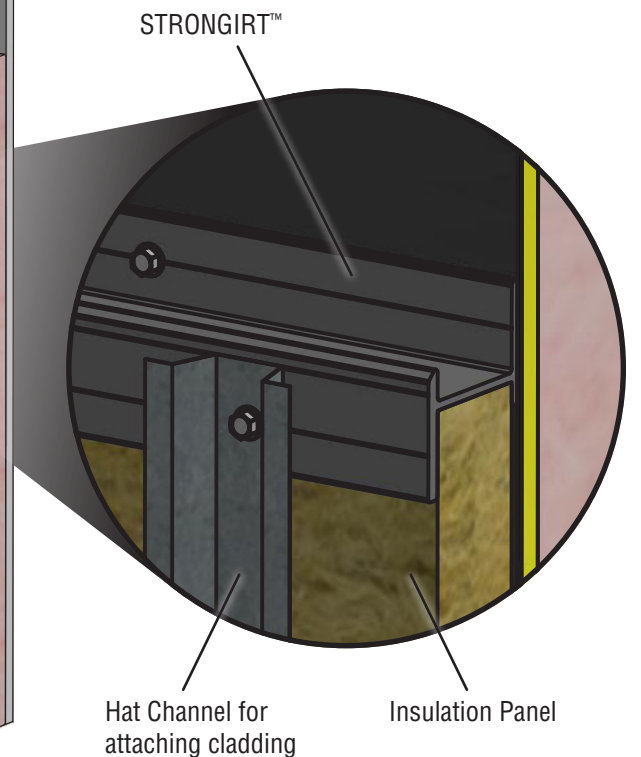
STRONGIRT™ profiles are designed to accommodate insulation thicknesses from 2" - 6" (50.8mm - 152.4mm) in 1/2" (12.7mm) increments.

INSULATION THICKNESS, t <sub>1</sub>	2.0" (50.8mm)	2.5" (63.5mm)	3.0" (76.2mm)	3.5" (88.9mm)	4.0" (101.6mm)	4.5" (114.3mm)	5.0" (127mm)	5.5" (139.7mm)	6.0" (152.4mm)
STRONGIRT™ DEPTH (NOMINAL), d	2.4" (61.0mm)	2.9" (73.7mm)	3.4" (86.4mm)	3.9" (99.1mm)	4.4" (111.8mm)	4.9" (124.5mm)	5.4" (137.2mm)	5.9" (149.9mm)	6.4" (162.6mm)



## Example Installation

STRONGIRT™ can be installed vertically or horizontally depending on construction requirements. Shown horizontally below.



Thank you for your interest in Strongwell fiber-reinforced polymer (FRP) products. We expect you will find Strongwell to be the ideal material manufacturer for your project. Strongwell offers an excellent value on a top-quality product, made exclusively in the USA, backed by unmatched technical and support resources.

## MATERIAL COMPARISON

	FRP	Steel	Aluminum
<b>Weight</b>	Light	Heavy	Light
<b>Life Cycle Cost</b>	Low	High	High
<b>Fabrication/Installation</b>	Easy	Hard	Moderate
<b>Corrosion Resistance</b>	High	Low	Moderate
<b>Maintenance</b>	Low	High	Moderate
<b>Electrical Conductivity</b>	Low	High	High
<b>EMI / RFI Transparency</b>	High	Low	Moderate

**ALL  
- IN -  
ONE**

Vertically Integrated  
In-House R&D, Engineering,  
and Fabrication

## WHY CHOOSE STRONGWELL



All Domestically Available Products  
are Made in the USA in ISO 9001  
Certified Facilities

**SINCE  
'56**

Pultruding Since 1956  
The World Leader in Pultrusion and  
Pultruded Structures and Shapes



Over 730,000 sq. ft. of Manufacturing  
Space in 4 Locations



Extensive Product Range  
Infinite Custom Profiles (up to 60" x 30")



**STRONGWELL**

ISO 9001 Quality Certified Manufacturing Plants

**BRISTOL LOCATION**

400 Commonwealth Ave. • Bristol, VA 24201 USA • (276) 645-8000

[www.strongwell.com](http://www.strongwell.com)